

PAÇAL

PAÇAL

INVESTMENT OPPORTUNITY

Industrial lots in of the biggest growth areas in Yucatan: a place where some enterprises such as: **Grupo Modelo**, **Crown Park**, **Grupo Keken**, have already settled their infrastructures, becoming this zone in the state's fastest growing pole.



VALUES TO CONSIDER IN YOUR DECISION-MAKING PROCESS

- Yucatan is continuously growing.
- It is the safest state in Mexico, which brings you a long-time stability.
- Highly qualified workforce.
- Strategic location with several access roads.
- International airports and railways.
- It is the safest state in Mexico, which brings you a long-time stability.



- **A safe investment:** low-cost lots.
- **Opportunities:** now it is the best time to invest.
- **Continuous growth:** a development with an exponential growth.

VALUES TO CONSIDER IN YOUR DECISION-MAKING PROCESS

RAILROADS

More than 1,000 Kms connecting with: **Veracruz, Tabasco and Campeche.**

TOP NOTCH HIGHWAYS

Connectivity with **Merida, Cancun, Campeche, Puerto Progreso and Mexico City.**

HARBOR NAVIGATION

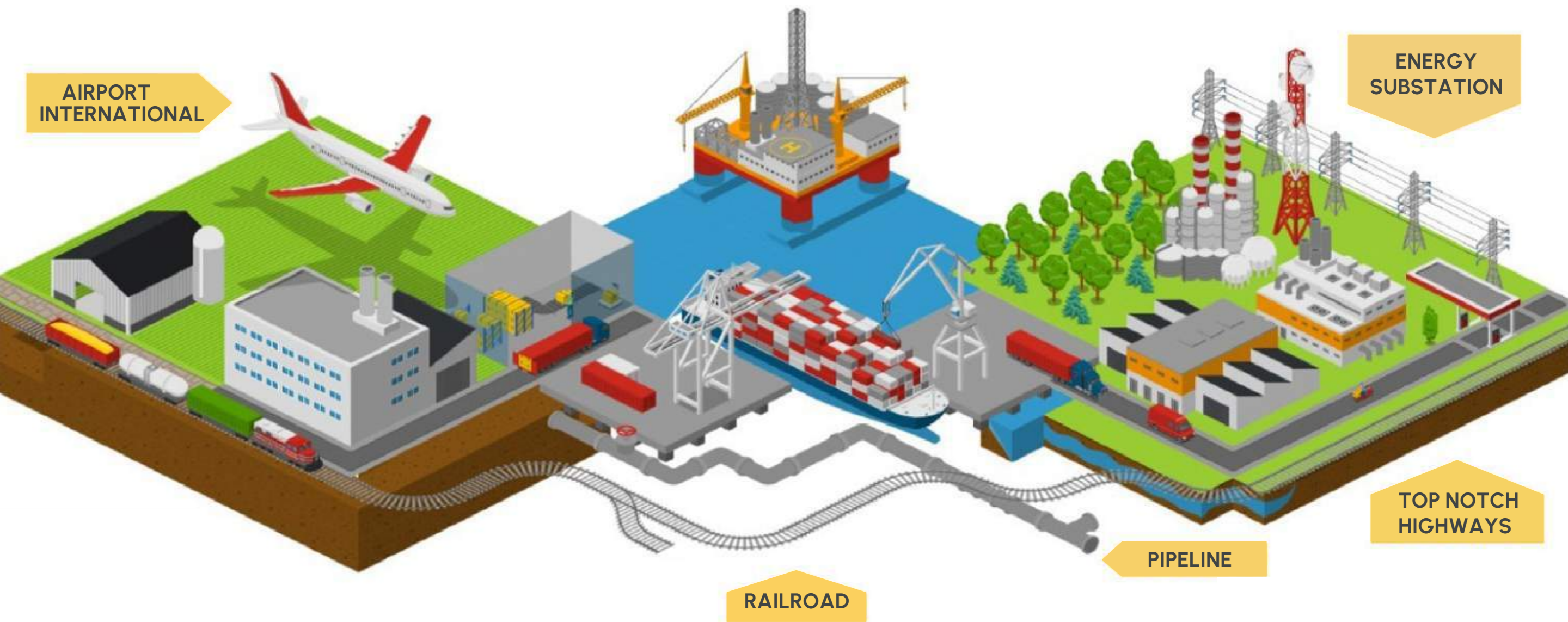
Ships to 40,000 tons connecting with **Texas, Panama, Florida and Alabama.**

INTERNATIONAL AIRPORTS

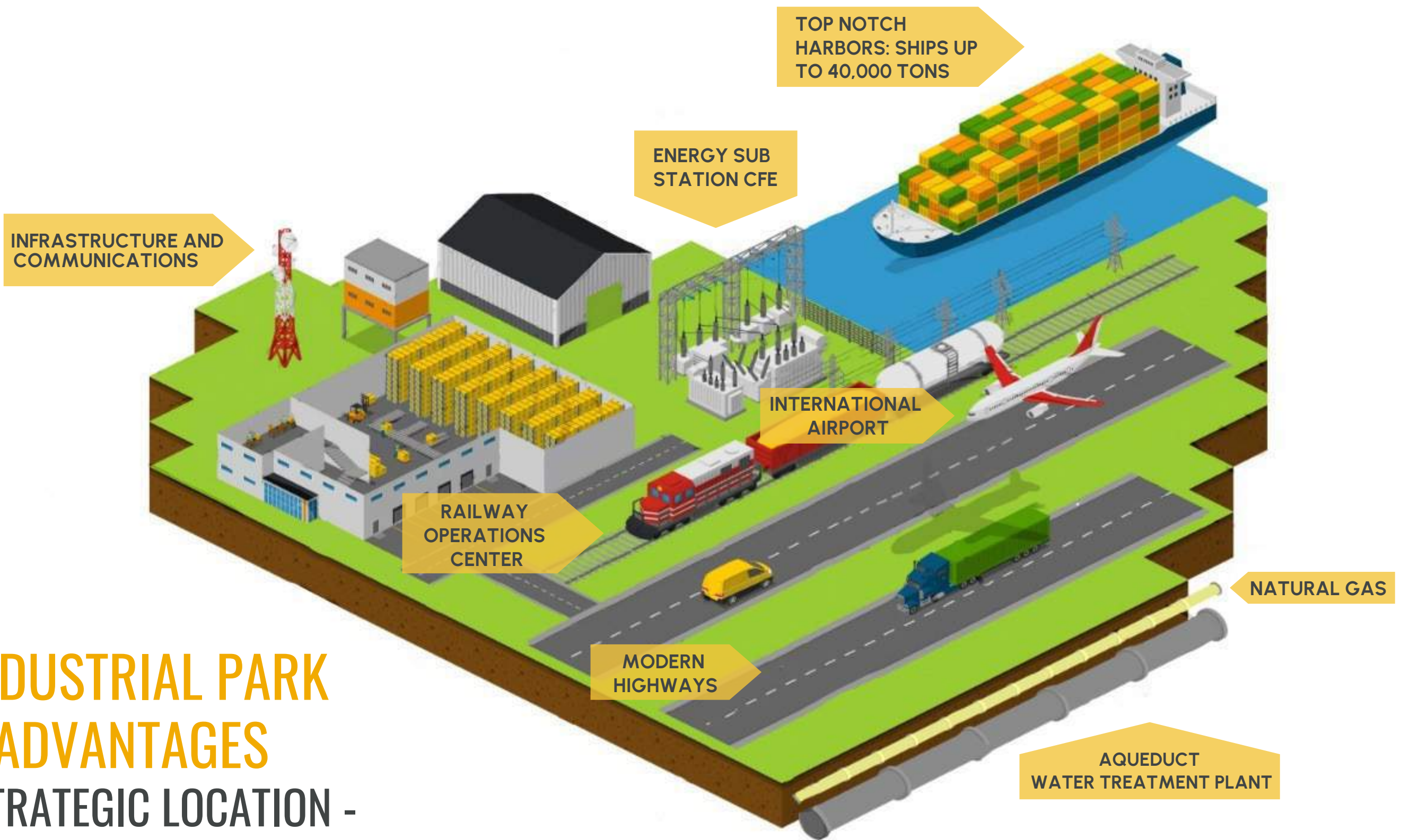
Merida City and Chichen Itza.



PACAL



PACAL



**INDUSTRIAL PARK
ADVANTAGES**
STRATEGIC LOCATION -

HIGH IMPACT ZONE

Due to its strategic location that quickly connects it with Merida City, Periferico highway, Progreso harbour, airports, and railways.



PACAL is the biggest investment **development in Yucatan**

See in
Google Maps

UPDATED INVESTMENT STATUS

COMPANY	INDUSTRY	INVESTMENT PROFILE	STATUS	INVESTMENT MXN\$
GRUPO MODELO AB IN BEV	BEER	PACKAGING AND CANS FACTORY	FINISHED	\$8,500,000,000.00
ENVASES UNIVERSALES	PACKAGING	PACKAGING AND CANS FACTORY	FINISHED	\$2,000,000,000.00
GRUPO KEKEN	SWINE	BALANCED FOOD FACTORY	FINISHED	\$1,470,000,000.00

SUB TOTAL \$11,970,000,000.00

GRUPO BACHOCO	POULTRY	CHICKEN NUGGETS PROCESSING FACTORY	ANNOUNCED	\$1,000,000,000.00
GRUPO GONDI	CARTÓN	PAPERBOARD AND CORRUGATED FIBERBOARD FACTORY	ANNOUNCED	\$750,000,000.00
GRUPO TRAILMEX	LOGÍSTIC	MULTI-MODAL CENTER	PERMISSIONS	\$650,000,000.00
GRUPO SAN FRANCISCO DE ASIS	DISTRIBUTION CENTER	INDUSTRIAL FACTORY	PERMISSIONS	\$1,326,000,000.00
UCHIYAMA MANUFACTURING	AUTO PARTS	AUTO PARTS FACTORY	ANNOUNCED	\$1,470,000,000.00

SUB TOTAL \$6,126,000,000.00

BIG TOTAL \$18,096,000,000.00

An investment that surpasses the **\$18,000,000,000.00** in the zone in the last 4 years.

YUCATAN: INDUSTRY OUTLOOK

36%

**Food and
beverages
industry**



16%

**Construction
industry**



10%

**Industry
support**



6%

**Logistic
Center**



6%

**Plastic
supplies
industry**



5%

**Chemical
industry**



4%

**Electronic
industry**



4%

**Metallurgical
industry**



3%

**Glass
industry**



3%

**Furniture
industry**



3%

**Cellulose
industry**



1%

**Shoes and
apparel industry**



1%

**Oil
industry**



1%

**Pharma
industry**



1%

**Machinery and
equipment industry**



STRATEGIC LOCATION

Located into the highest economic growth zone in **Yucatan** and with the best capital gain in the state: **Hunucma**



+ \$300 MDP of investment in high class harbours.

INDUSTRIAL LAND USE

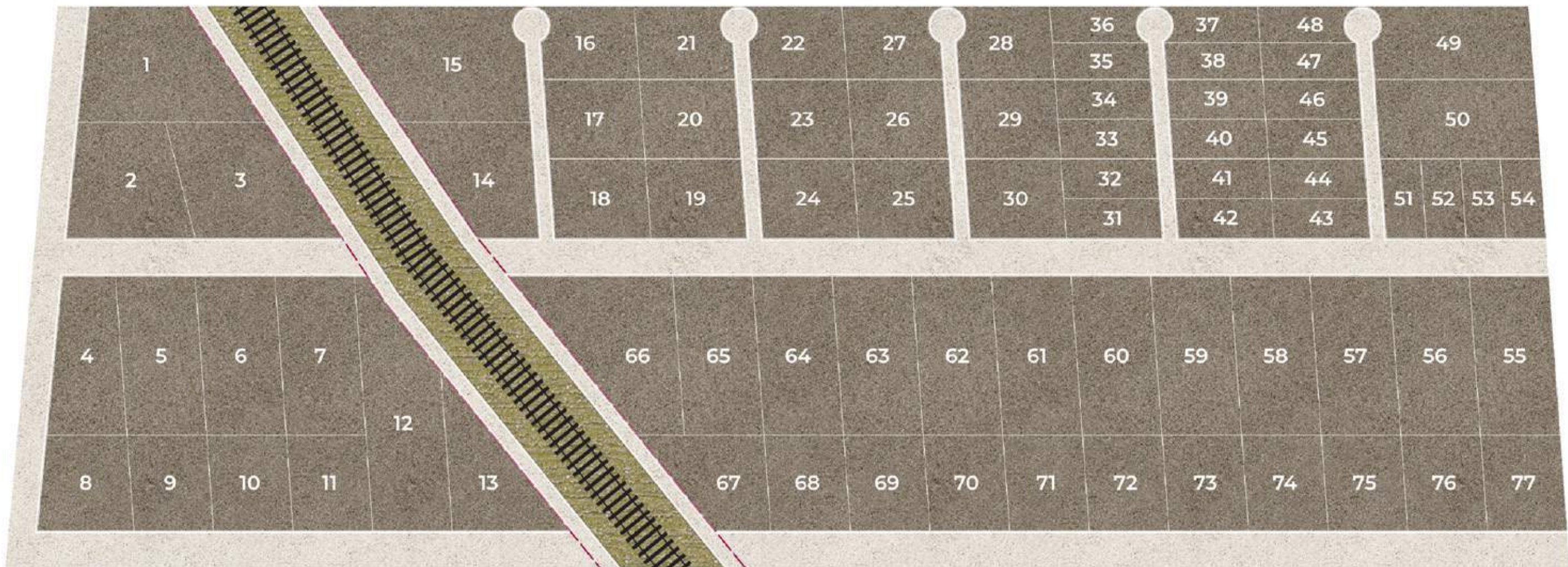
30.8 Hectares





PACAL

MXN \$ 1.72 per Sq. Ft.



PACALCOMERCIAL.COM

77 TERRENOS



PACAL

PACALCOMERCIAL.COM